

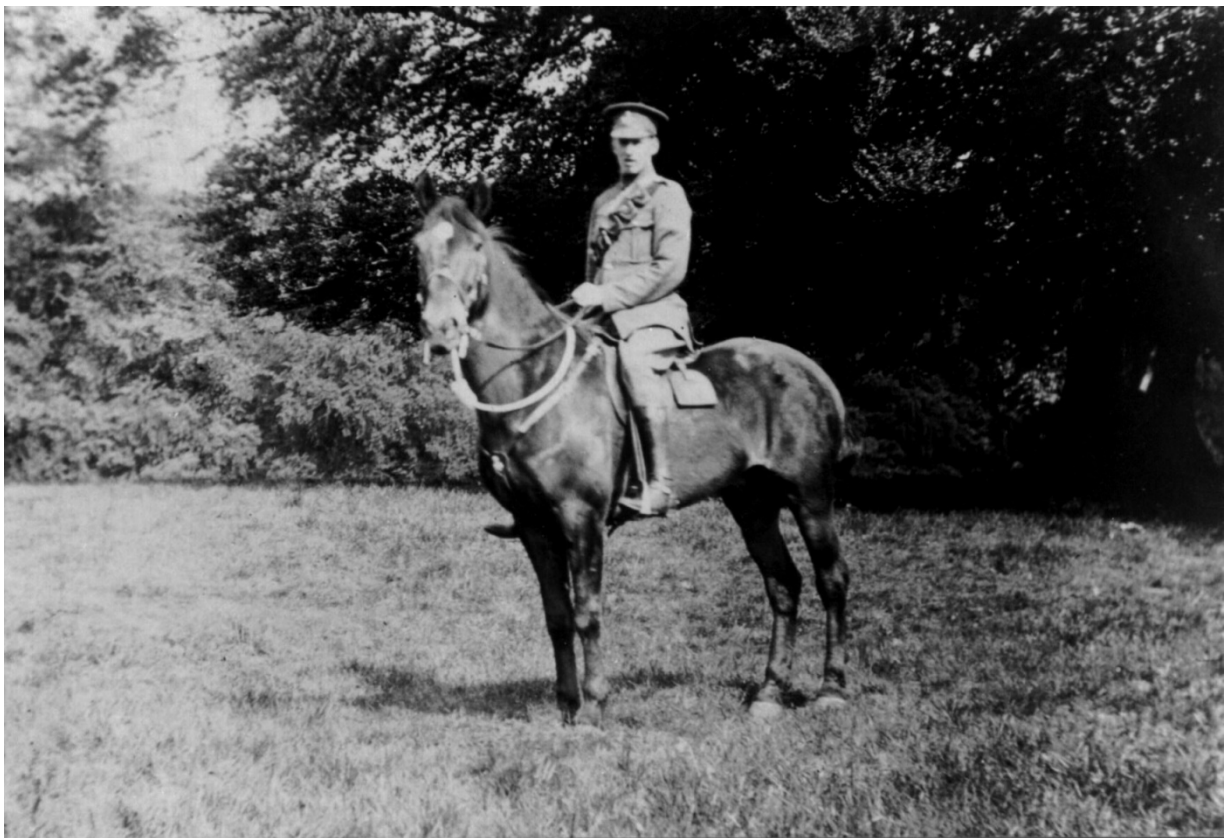
## **War Horse Nancy**

**Ewelme News, Apr-May 2012**

### **Ewelme's very own War Horse Nancy**

With the recent release of the popular film '*War Horse*' highlighting the role of horses in the Great War, it seems appropriate to retell the story of Ewelme farmer Tom Orpwood's mare Nancy.

Mr Orpwood joined the Army and took Nancy to France as his mount. Unfortunately we don't have details of their service, bar that by an extraordinary coincidence, a shipment of hay from his own Ewelme farm was delivered to them.

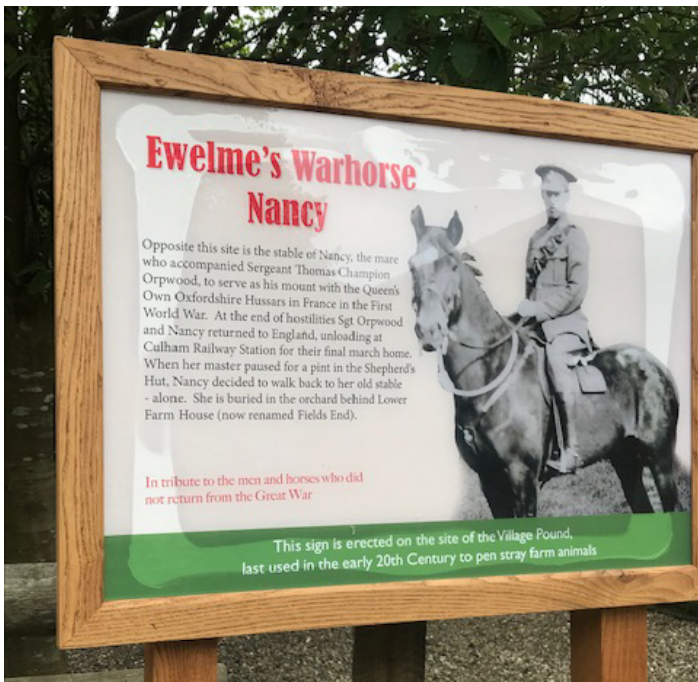


**Nancy with Thomas Champion Orpwood**

At the end of the War Mr Orpwood brought Nancy home, unloading her from the train at Watlington Station. At Britwell Salome he turned her loose with a slap on the rump, and despite years away in that terrible conflict, she walked straight back to her own stable! When she died she was buried in the orchard behind Mr Orpwood's house, Lower Farm (now Fields End) and a plum tree planted over the grave. Miss Chamberlain of The Hyde used the plot as a vegetable garden and reported that the site grew magnificent rhubarb. Several old plum trees there have only recently been cleared with the change of ownership of Fields End.



**Nancy and Sergeant Orpwood**



**Unveiling of the memorial board in April 2019**

*Ewelme Village Archive*