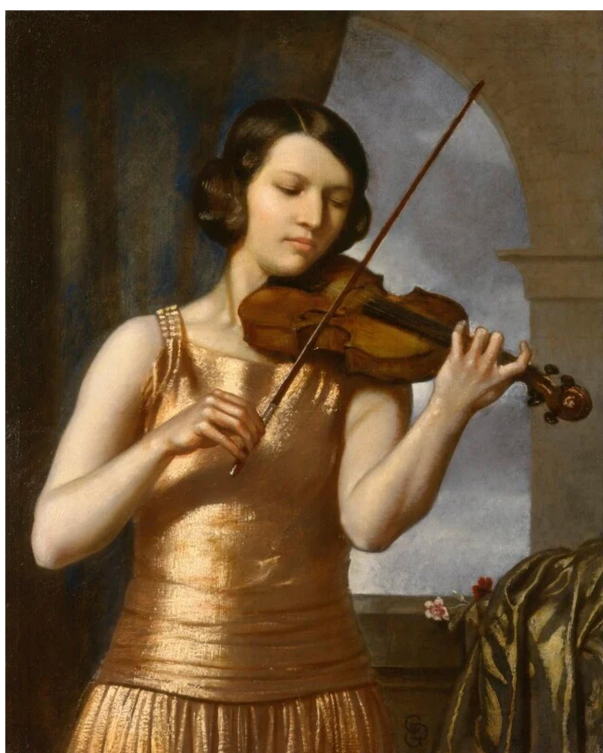


The Musical Ladies of Dayspring and Garden House

Two famous duettist violinist sisters born into a musical family from Bucharest chose Ewelme as their home in the 1950's as they had formed an attachment to the village from visiting their friends, Lord and Lady Somervell in the Old Rectory in the war.

Adila Fachiri (1886-1962) was widowed in 1939 with a young daughter Adrienne was the great-niece and pupil of Joseph Joachim who bequeathed to her a Stradivarius violin! Her younger sister Jelly D'Aranyi (1892-1966) never married but together they bought Dayspring House and the associated land from the motor engineer Mr Howell for £600 situated up the hill behind the garage on the High Street. They were famous throughout Europe and Britain, and counted Princesses Helena Victoria and Marie Louise, two granddaughters of Queen Victoria, amongst their admirers.



Left: Jelly d'Aranyi and right Margaret Ritchie

The sisters moved from Dayspring to Garden House, which was built as a music room for them in their grounds in 1952 and many famous composers and musicians visited them there. Composers Vaughan Williams, Ravel and Bartok dedicated works to Jelly and Gustav Holst's *'Double Concerto for Two Violins'* was written for the sisters. (A family friend, Baron Erik Palmstierna, the Swedish Minister in London, had previously moved into a bungalow in the grounds and remained with the sisters after they left Ewelme for Florence in 1958).

Another musical lady, a renowned operatic soprano singer Margaret Ritchie (1903-1969), bought Garden house in 1958 for £5,800 and was remembered as having entertained famous musicians and singers such as Joan Sutherland. A versatile artiste she played the part of a real-life singing star Adelina Patti in the film *'Pink String and Sealing Wax'* and also sang on the soundtrack of the 1948 film *'Scott of the Antarctic'*. She is remembered for founding a summer school in Oxford in 1960. Sadly, Ms Ritchie died of throat cancer in 1969 aged 66 and is buried in the New Churchyard in Ewelme.

A full history of the ladies and the properties was written by Jenny How – see file 13.9.