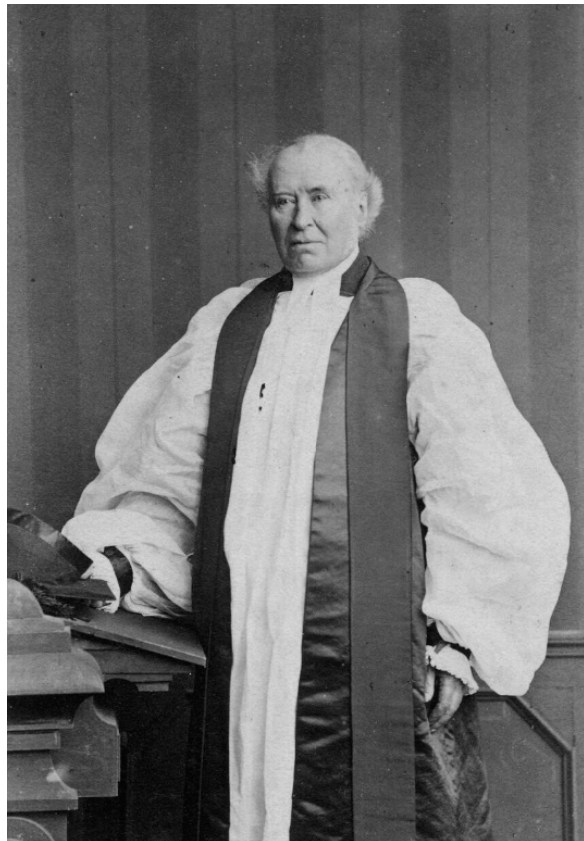


Village Post Boxes

Ewelme News, Feb Mar 2014

The post box outside the village hall was repositioned there in about 2004 as previously it had been by the wall of Kings Pool Cottage, to the left of the village shop, once a Post Office. Thankfully the vintage G VI R post box was retained to continue its long service. This prompted a link to the late Moira Hampden Calvert's taped interview where she proudly mentioned 'Granny's Box'. Her grandmother was Catherine Hampden (who died in 1930 aged 83). In Victorian times, when there were deliveries and collections up to 3 times daily, the Hampden's were sufficiently important to request the Royal Mail of the day to install a post box in the wall of their home, The Old Mansion – or Cottesmore Mansion as it is now. There is a post box there to this day, but it is now a modern E II R box. Moira said that the original VR box was kept by the family when a new one was installed - a valuable memento of 'Granny' indeed.

The Hampden family came to the village when Moira's great grandfather, the controversial theologian Rev Renn Dickson Hampden, became the Rector of Ewelme from 1836 - 1848. He bought the Old Mansion to accommodate his Curate. Later, Rev Hampden's son; Moira's grandfather, married the Curate's daughter - the Granny of 'Granny's Box' and the house remained in the Hampden family for four generations. A flamboyant character, Rev Hampden demolished Beak's Place, an old house opposite The Old Mansion, as it spoiled the view! In 1848 he was appointed Bishop of Hereford and he died at the family's London home, 107 Eaton Place, in April 1868.



Left: An old GR post box in Ewelme and right: the Rev Renn Dickson Hampden